



ABOUT BEDROCK PIPELINE

Bedrock Production, LLC (Bedrock), headquartered in Houston, Texas is a natural gas gathering system and facilities are located throughout Texas. Bedrock Energy Partners operates 220 miles of gathering pipeline for the purpose of transporting natural gas to third party producers within the Barnett Shale. We are fully committed to operating our pipelines in a safe and productive manner on a daily basis.

CONTACT INFORMATION

Jonathan Montoya
 1439 Farmer Rd
 Weatherford TX, 76087
 Phone: 817-202-5126
 Email: jmontoya@bedrockep.com

PIPELINE SAFETY

System failures occur infrequently along the nation’s network of interstate natural gas pipeline facilities, and many of these are caused by damage from others digging near the pipeline. We watch for unauthorized digging, but we request your help to notify us.

We strongly encourage those who are going to dig to call their state One-Call Center or the 811 “Call before you dig” hotline to allow pipeline companies and owners of other buried utilities a chance to mark the underground facilities in the area before digging begins.

You can also find out where other companies’ pipelines are in your area by going to the National Pipeline Mapping System website at www.npms.phmsa.dot.gov.



WHAT ARE THE SIGNS OF A NATURAL GAS PIPELINE LEAK?

- Blowing or hissing sound
- Dust blowing from a hole in the ground
- Continuous bubbling in wet or flooded areas
- Gaseous or hydrocarbon odor
- Dead or discolored vegetation in a green area
- Flames, if a leak has ignited

WHAT SHOULD I DO IF I SUSPECT A PIPELINE LEAK?

Your personal safety should be your first concern:

- Evacuate the area and prevent anyone from entering
- Abandon any equipment being used near the area
- Avoid any open flames
- Avoid introducing any sources of ignition to the area (such as cell phones, pagers, 2-way radios)
- Do not start/turn off motor vehicles/ electrical equipment
- Call 911 or contact local fire or law enforcement
- Notify the pipeline company
- Do not attempt to extinguish a natural gas fire
- Do not attempt to operate any pipeline valves

EMERGENCY CONTACT:
1-817-841-8885

PRODUCTS/ DOT GUIDEBOOK ID#/ GUIDE#:		
Natural Gas	1971	115

TEXAS
COUNTIES OF OPERATION:

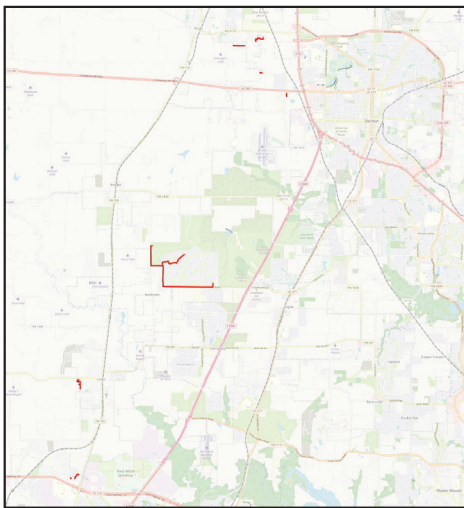
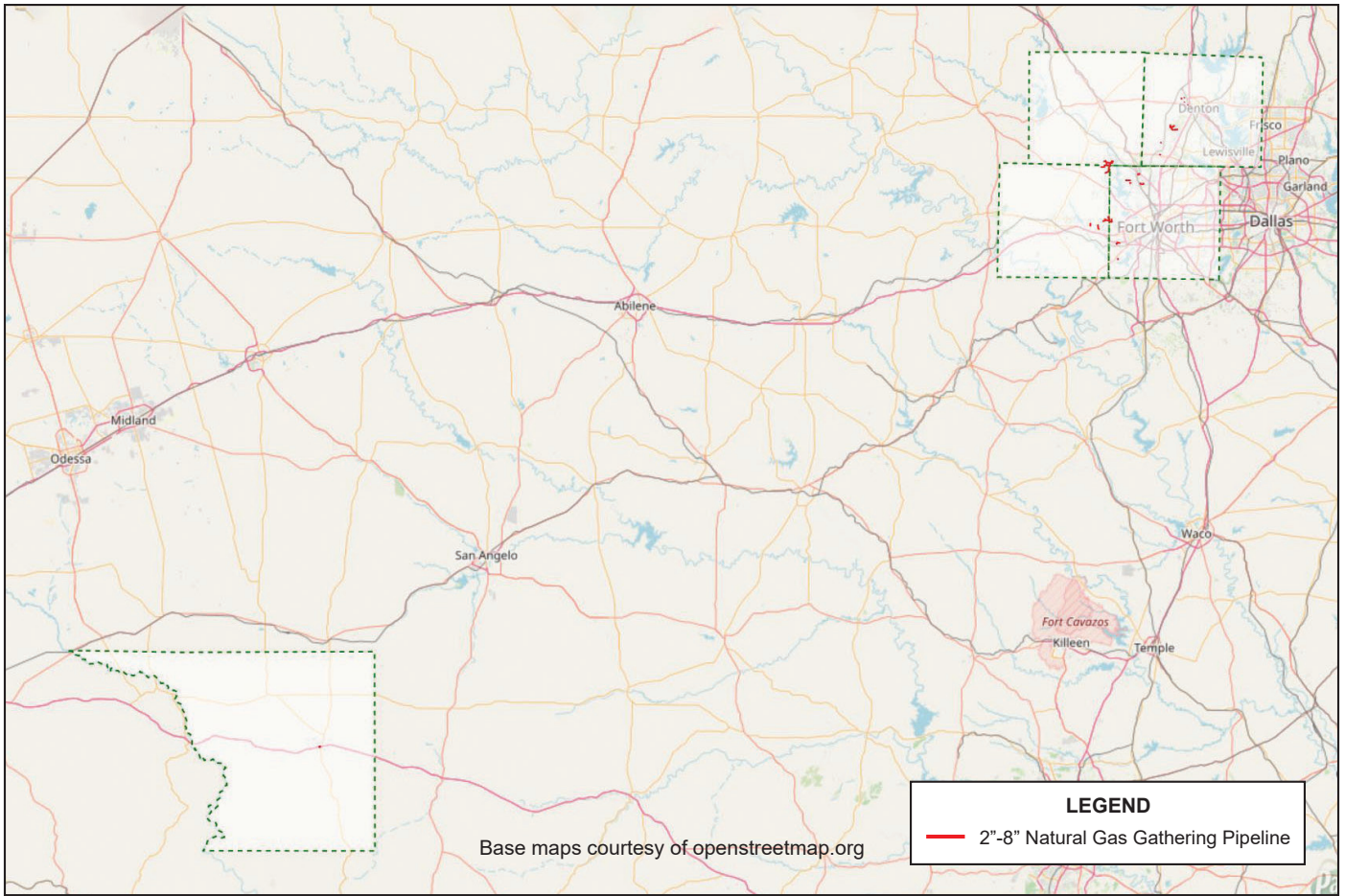
Crockett	Tarrant
Denton	Parker
Johnson	Wise

Changes may occur. Contact the operator to discuss their pipeline systems and areas of operation.

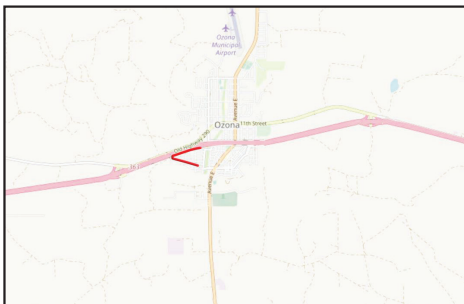
PIPELINE LOCATION AND MARKERS

Pipeline markers are used to indicate the approximate location of a natural gas pipeline and to provide contact information. Aerial patrol planes also use the markers to identify the pipeline route. Markers should never be removed or relocated by anyone other than a pipeline operator.

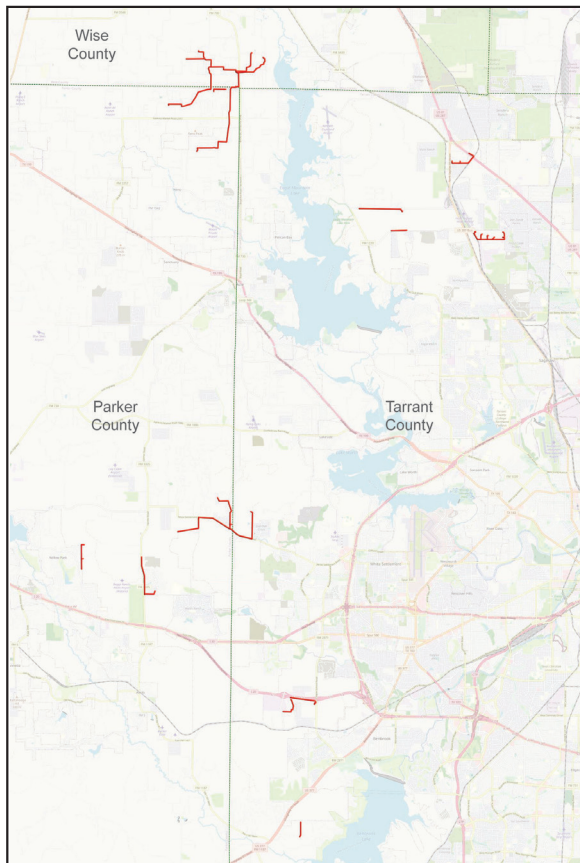




Denton County



Crockett County



Wise, Parker and Tarrant County